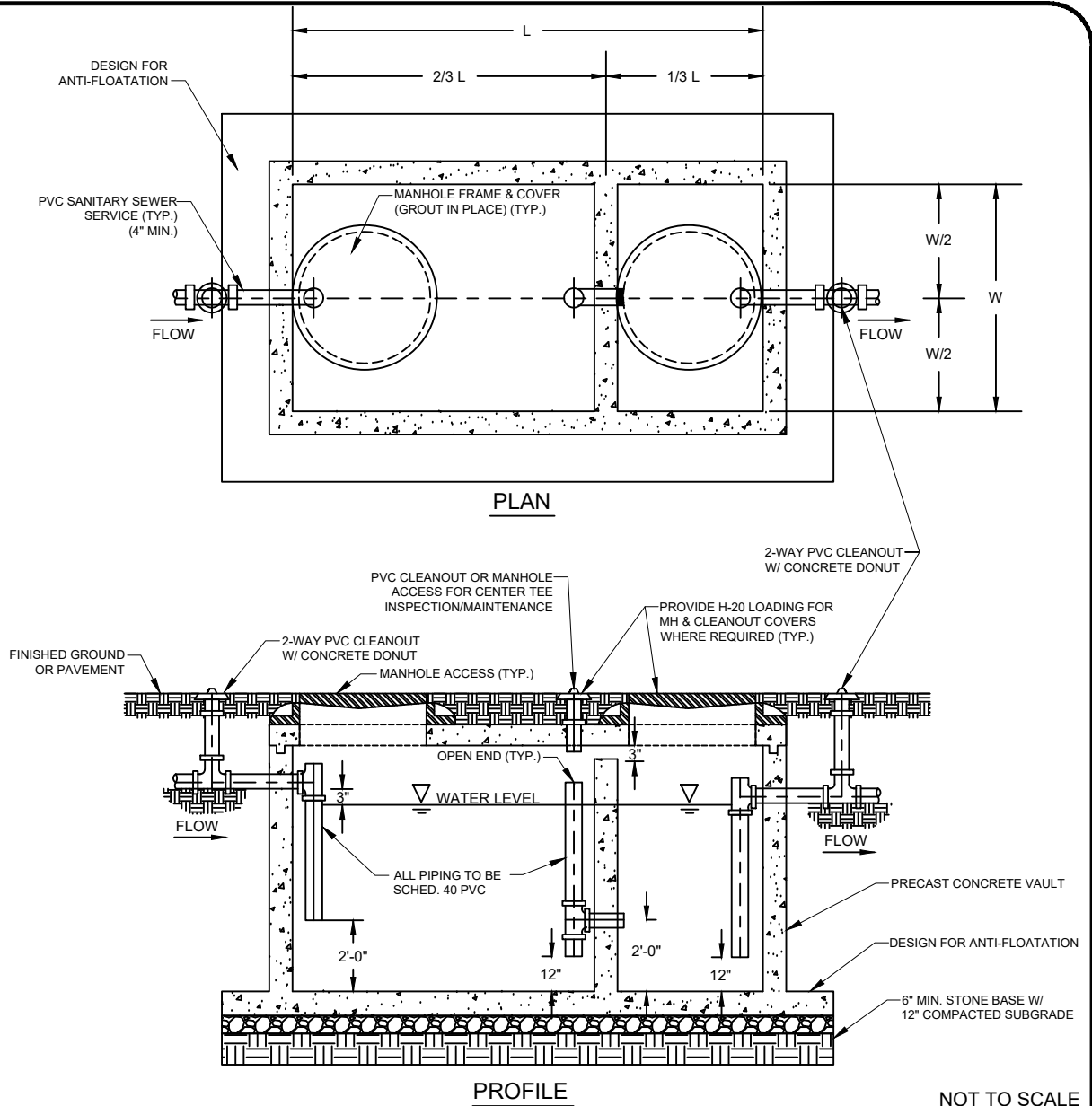


NOTES:

1. ALL PROPOSED GREASE INTERCEPTORS TO BE SUBMITTED TO THE CITY OF KANNAPOLIS FOR APPROVAL PRIOR TO INSTALLATION.
2. ALL GREASE INTERCEPTORS TO BE INSTALLED, OWNED, AND MAINTAINED BY THE PROPERTY OWNER.
3. USE NON-SHRINK GROUT AT ALL PENETRATIONS.
4. PROVIDE BUTYL RUBBER SEAL BETWEEN ALL SECTIONS AND TOP.
5. LOCATE MANHOLE ACCESS ABOVE TEES FOR VISUAL INSPECTION AND MAINTENANCE.
6. ALL GREASE INTERCEPTOR MANHOLE AND CLEANOUT COVERS SHALL BE APPROPRIATELY IDENTIFIED TO DISTINGUISH FROM SANITARY AND/OR STORM SEWER INFRASTRUCTURE.
7. EXTERIOR IN-GROUND GREASE INTERCEPTORS LOCATED IN GREEN SPACE SHALL HAVE MANHOLE FRAMES AND COVERS ENCASED IN A 4' X 4' CONCRETE PAD. THE CONCRETE PAD SHALL EXTEND A MINIMUM OF 6" ABOVE THE FINISHED GRADE AND BE MAINTAINED IN SUCH A WAY AS TO REMAIN FREE OF LANDSCAPING MATERIAL.
8. OPEN END OF ALL TEES SHALL BE A MINIMUM OF 8" ABOVE WATER LEVEL.



STANDARD GRAVITY GREASE INTERCEPTOR

MARCH 2024

350A